

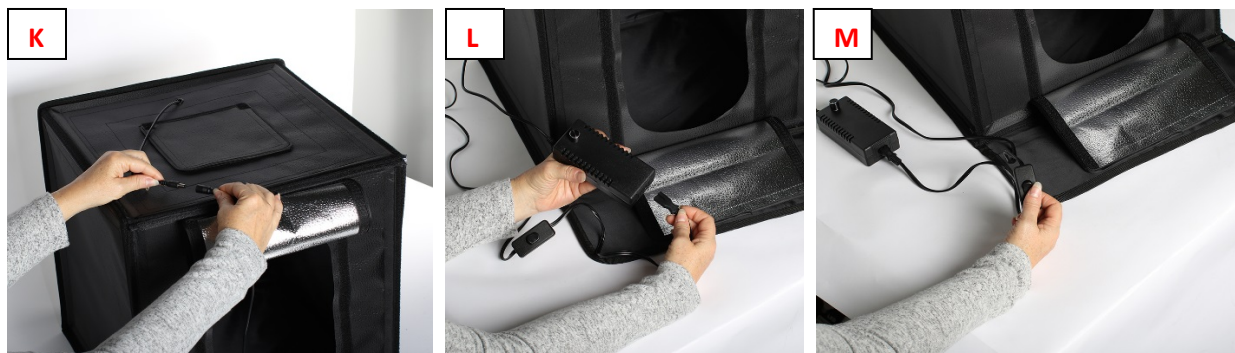
**How to set up LED Desktop Studio** - LED panel comes pre-installed. Simply unfold the sections and lift up the sides to form a cube. Press the hook and loop edges together so cube retains its shape. (A-F)



Once cube is formed, rotate it so that LED panel is facing up (G-H). This will make it easier to install the diffuser. Align and press into place. Then rotate cube so the LED panel is located on top. (I-J)



**Installing dimmer** - Connect LED panel with dimmer cable attached to dimmer. (K) Connect On/Off power cable to the dimmer. (L) Plug into wall outlet and turn on LEDs. (M)



**Installing sweep** - Colored sweep attaches with hook and loop connectors at the upper back edge of the desktop studio. Forward edge of the sweep can be tucked into the front interior lip for additional reflection. Stage the interior and you are now ready to start shooting with a DSLR or mirrorless camera, or smartphone.



When finished and light is cool, pull apart the sides to release the edges then fold back into the Portfolio/Carry Case for storage. Detach and store cord with dimmer in the exterior pocket.

*You don't have to be a professional to take great pictures!*

#### **Smith-Victor WARRANTY**

Smith-Victor warrants to the first commercial owner to be free from defects in the material and workmanship for a period of one (1) year from the date of purchase and will repair or replace product found to be defective under normal use. Warranty does not cover damage caused by shipment, by product abuse, accident, modification, disassembly or use beyond intended use specified by Smith-Victor.

This warranty is the only warranty made to any person by Smith-Victor and is in lieu of all other expressed or implied warranties. The remedies set forth in this warranty shall be the exclusive remedies available to any person for breach of this warranty. Under no circumstances shall Smith-Victor be liable to any person for incidental or consequential damages, whether arising out of breach of warranty or other contract, negligence, strict liability or other tort or otherwise.

Please review other fine product lines available at PromarkBRANDS.

- **Smith-Victor • Photogenic • Dot Line • Quantum • Radiopopper •**
- **Photoflex • Cool-Lux • Speedotron • Norman • Logan •**

Smith-Victor is a division of PromarkBRANDS

1268 Humbracht Circle, Bartlett, IL 60102 U.S.A.

800-348-9862 or 630-830-9200

[sales@smithvictor.com](mailto:sales@smithvictor.com) | [www.smithvictor.com](http://www.smithvictor.com) | [www.promarkbrands.com](http://www.promarkbrands.com)

